

NEW

P  
R  
O  
S  
P  
E  
C  
T  
U  
S



**SCILORE**  
CENTRAL SCHOOL

Affiliated to CBSE-Delhi No.930095



**ADMISSION PRE-KG/LKG/UKG (Montessori)**  
**OPEN FOR CLASSES I-IX & XI to XII (State & CBSE)**





Dr. D. PONNACHAN (Chairman)





# WELCOME TO THE SCHOOL FOR FUTURE

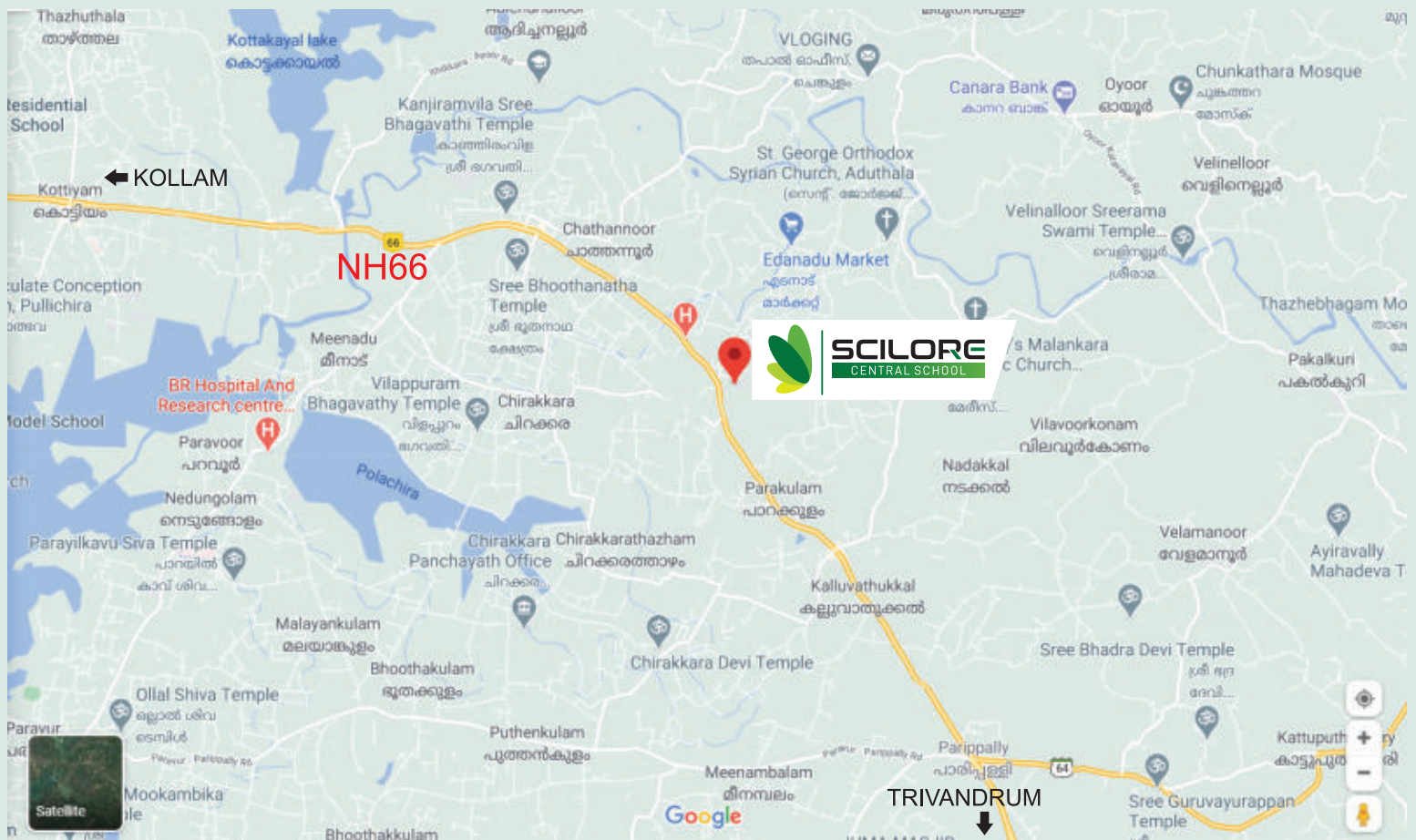
**Scilore Central School** is a K-12 co-educational school established to ensure opportunities and provide facilities for the holistic development of a learner. Now the school is run by a group of academicians with vast experience in managing K-12 CBSE schools with more than 8000 students a year. Students of **Scilore Central School** will receive invaluable support and guidance from the experts and professionals in grooming them as 21<sup>st</sup> century citizens.

Every child entering the school might appear similar but our focus is on identifying and nurturing the uniqueness of every individual. Students are encouraged to discover their strength, talents, interests and passion -all the elements that come together to define their individuality. Every child leaves **Scilore Central School** having explored the various facets of his or her inner potential to the fullest.

We are committed to instill 21<sup>st</sup> century skills in every student as it is the need of the hour. Our pedagogy based on Competency and Value Based Education is universally accepted and Art Integrated Education promotes a joyful learning experience in the campus. Hence parents can confidently admit his/her child at **Scilore Central School**. On behalf of the new management we welcome you all for experiencing 21<sup>st</sup> century learning in our blessed campus.

Dr.D.Ponnachan  
Chairman  
+91-9387310646

Kishore Antony M.A., B. Ed.  
Principal  
+91-8219279499



### OUR MISSION

The mission of the school is to provide an environment for the holistic development of every child and in particular to achieve National level of competency in cognitive, affective and psycho-motor domain; acquisition of 21st century skills; foster cultural learning and national values; strengthen knowledge and attitude related to livelihood skills and promote life long learning; promote physical fitness, health and well being; experience happiness, peace and to live in harmony with nature and promoting sustainable development.

### VISION

Every child if fostered in a conducive environment will excel in all domains of development and his/her success depends on the collective experience he/she gains during childhood. Our vision is to make Scilore Sreeniketan a centre for excellence that prepares a student to be socially committed and successful citizen with right attitude through our research and competency based education in a sustainable and scalable way.

### MOTTO

**“Learning today - Leading tomorrow”**

### NEW MEMBERS OF THE MANAGEMENT

1. Dr. D. PONNACHAN

(Chairman, St.Marys Central School, Kollam)

2. Adv. SAJAN K. MATHEW

(Director, National Central School, Ezhamkulam)

3. MIDHUN R. CHAND

(Director, Chand Academy, Trivandrum)

## AGE LIMIT

### At the time of admission

Montessori Pre-KG	2.5 to 3 yrs.
Montessori Grade-1 (LKG)	3 to 4 yrs.
Montessori Grade-2 (UKG)	4 to 5 yrs.
Class 1	5 to 6 yrs.
Class 2	6 to 7 yrs.
Class 3	7 to 8 yrs.
Class 4	8 to 9 yrs.
Class 5	9 to 10 yrs.
Class 6	10 to 11 yrs.
Class 7	11 to 12 yrs.
Class 8	12 to 13 yrs.
Class 9	13 to 14 yrs.
Class 10	14 to 15 yrs.
Class 11	15 to 16 yrs.
Class 12	16 to 17 yrs.

### WHY SCILORE ?

- EXPERIENCED, WELL TRAINED & DEDICATED TEACHERS.
- PURE MONTESSORI ACTIVITY ORIENTED KG CLASSES & WELL EQUIPPED MONTESSORI LABS
- FULLY FURNISHED LABS.  
Biology lab  
Chemistry lab  
Physics lab  
Computer & Robotics Lab
- Preparation for JEE/NEET/ KEAM for +1, +2 classes.
- Foundation courses for KVPY, NTSE, JEE/NEET for Classes 8,9 & 10
- CIVIL SERVICE ORIENTATION PROGRAMME for classes 7-12.
- ABACUS TRAINING PROGRAMME
- Training in Cricket/ Football/Basket Ball/ Kho-Kho/Kabaddi
- Special training in Art, Craft, Performing Arts, Health check-up & Wellness programmes.
- Transport available to all routes.





# CURRICULUM

Our inclusive and extensive curriculum is set to achieve our National Goals and Global standards in education. Qualified teachers with practical experiences guide the learners to achieve the learning outcomes. The faculty at Scilore Central School is selected by a group of academicians and they undergo in-house training sessions periodically. Their performance is assessed, to ensure the use of Child Centric methodology in curriculum transaction, by our mentors. We provide the curriculum prescribed by CBSE and follow recommendations of NEP for Pre-KG, LKG, UKG and Classes 1 to 12. Both science and commerce streams are available for Classes 11th & 12th.

## PEDAGOGY

Experiential learning, Arts & Sports integrated learning.

Considering the overall development and unique skills of every learner Scilore Central School follows a student friendly pedagogy ie. Arts & Sports integrated learning. The first hand experience through practical doing helps the child to demonstrate or apply the skills in real life; hence experiential learning is the focus and the thumb rule is to give that experience to the child. We are completely following the circulars of CBSE and embracing the latest developments inspired from the NEP in this regard. School provides opportunities to learn, practise and present various skills through Science Exhibitions, Arts Fests and Sports Competitions. Winners are rewarded and promoted for attending higher competitions at State and National level. The aim is to create joyful learning experience for every child.

## Value Based Education

Personal values are developed at Scilore Central School to give a child, positive direction, a purpose to life and develop a strong relation with family, friends, society and nature. Our curriculum is planned to transfer the child from being self centered and egoistic into an integrated personality and a responsible citizen.

The school ambience, faculty, various programmes and student teacher relationship provide opportunity to develop rich culture and well being of all. The most significant step towards humanity is to develop trust, respect, love and such values which we consider will bring joy, peace and harmony for all.

## Competency Based Education (CBE)

Scilore Central School is more focused on approaches that helps a child to face his life. Spending almost one third of his most energetic phase at school, we are committed to prepare him for any challenges through CBE. Competency Based Education is promoted by CBSE and the teachers are trained to help the learner apply his skills in real life. So developing competencies for future jobs and identifying them is our concern and the curriculum is prepared by including 21st century skill development programmes. Hence various streams and a wide range of career options are introduced to a child, where he can prioritize any of them according to the competencies he developed or vice versa.



## Co-Curricular Activities

Several skills, qualities and values; instrumental to the holistic development of a child are learned outside the classrooms. Scilore Central School has a Structured Co-Curricular programme that supports a child's learning process. There are several activities in various modules for different age groups. Every student at Scilore Central School pursue different activities under each module according to his/her interest.



## Sports & Games

Besides nurturing athletic talents, Sports and Games, play a vital role in inculcating healthy competition and team work among students, keeping them mentally fit and happy. Qualified trainers and Coaches monitor the progress of each child and ensure that they learn and excel at a wide range of sports and games. Students are trained in outdoor activities like Athletics, Football, Cricket, Basketball, Kho-Kho; indoor activities like Badminton, Chess along with Aerobics and Martial Arts.

## Youth Festivals and National Celebrations

Youth festivals and celebrations are the best platforms for students to showcase their talents in visual, performing and digital arts. Children experience a variety of skills, realize the need of being together and to embrace the rich culture of our nation.

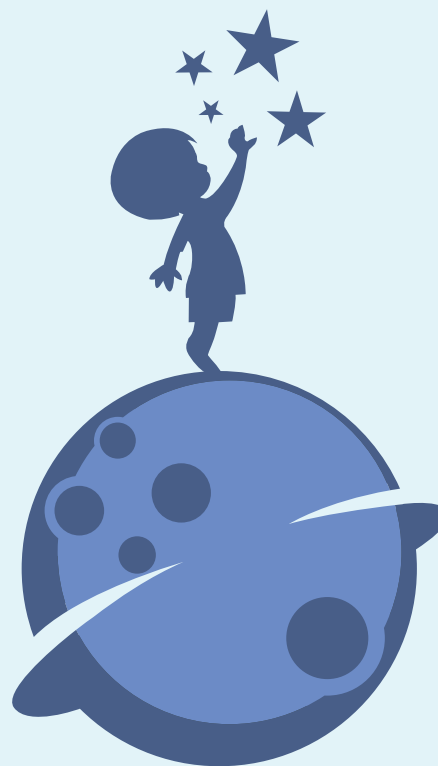
## Science Exhibition

To inculcate scientific spirit and temper, Scilore Central School focuses on rich experience a child get from project oriented-experimental learning. Our Science Exhibition promotes the child to think rationally, scientifically and solve the problems in a sustainable way.





# MAP YOUR CAREER



## Career Guidance & Counselling

Counselling and Guidance of young students are considered to be a crucial aspect. This not only involves highlighting a student's interests and areas but also addressing the need for guidance and clarity to build competencies in making choices early in a student's life. Career Guidance and Counselling at Scilore Central School introduces the scope and opportunity of a wide range of 21st century jobs according to the interests and skills the student possess. Constant focus and interaction between students and counsellor will bring about the most desirable results over time.

## Skill Based Education

At Scilore Central School we are committed to groom our students to become leaders in their chosen field. To facilitate this process it is paramount for students to think beyond grades and acquire real life skills. The whole structure depends on the individual; where students control their learning with the help of assessments and hands on projects. Various skill based activities and vocational training programs at our school give learners new experiences which can provide more opportunities later in their life.





## MANUAL

### Admission

- ▶ Admission forms & prospectus are available at school office.
- ▶ Admission form has to be duly filled by the Parent/Guardian and attach;
  - i) 2 passport size photos of the candidate
  - ii) Copy of Birth Certificate of the candidate
  - iii) Copy of Aadhar of the candidate
  - iv) Transfer Certificate from the previous school
- ▶ Admission test will be conducted for the student, based on NCERT syllabus.
- ▶ Admission will be confirmed on the basis of scores received by the Student in test & interview.
- ▶ List of Students eligible for admission will be displayed at school office and parents will be informed on the same telephonically.

### School timing

- ▶ School office : Monday to Saturday (8.30 am to 5.00 pm)  
Class timing : 9.00 am to 3.30 pm

### School Uniform

All the students have to wear neat and tidy School Uniform daily in campus. Only the students celebrating birthday can come in colour dress. School Id card, clean and polished shoes, tie and belt are compulsory

### Classes offered

Montessori Pre-KG  
Montessori LKG  
Montessori UKG  
Classes I - XII (CBSE)  
Classes XI - XII (STATE)



# Hack Your Goals

This programme helps the child to realise the skills that he should possess and the opportunities in future. He gets the rare opportunity to master soft skills through various programmes and conquer the fear of failure and gain confidence. He will start to dream big and realise the big picture.

## 21<sup>st</sup> Century Skill Acquisition Program

Preparing our students for the 21st Century jobs through a series of co-scholastic and vocational activities, is the need of the hour. At Scilore Central School curriculum is structured to train our students on these 21st century skills. Human resources have to be skilled to adjust with the rapid changes and rising global needs. They have to think deeply about the issues, solve problems creatively, work in teams and handle the flood of information along with flexibility and other leadership skills.



IPS IAS

# MY GOAL

Soldier

Scientist

Industrialist

Engineer

Statesman

Captain

Astronaut

Pilot

Chemist

Economist

Musician

Teacher

Actor

Entrepreneur

Designer

Doctor

Dancer

Singer



PASTE  
YOUR  
PHOTO

I Want to become a

.....



**SCILORE  
FAMILY**



**THANK YOU FOR  
CHOOSING US.**

**-Managed by-  
THE GREEN FOUNDATION**

---

Karamcode P.O., Chathannoor, Kollam-691579  
Affiliated to CBSE-Delhi No.930095

---

Contact Us :  
School Office : 0474 2590799, +91-7907639054  
Chairman : +91-9387310646  
Principal : +91-8219279499

E-mail : [scilore4future@gmail.com](mailto:scilore4future@gmail.com)  
Web : [www.srncentralschool.com](http://www.srncentralschool.com)